

RIKEN

New

200MPa midget pumps

SMP-2K-1 Series



SMP-2K-1C

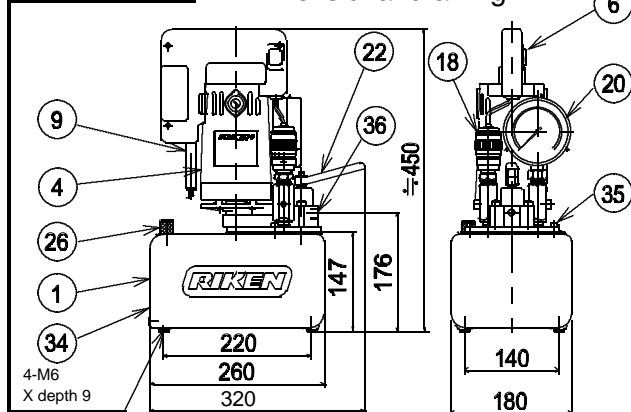
Features

- Compact and light weight. Good for shipbuilding, civil engineering and heavy industry.
- Automatic low and high pressure two-stage pumps giving very high performance.
- Pressure gauge and pressure switch standard accessories.
- 4.5 litres reservoir type pump as standard. Also available with 2ltrs. or 7 ltrs. reservoir type pumps.

Specifications

Model	Electric motor (50/60Hz) geared commutator				Hydraulic pump				Reservoir capacity ltrs.	Usable oil ltrs.	Weight kg
	Insulation type	Voltage (V) (phase)	Rated output kW	Max. currenxy output at 5 minutes at 100V A	Max. working pressure MPa		Output ltr/min				
SMP-2K-1B	Class E Open type	100, 200, 230 (Single)	0.45	10	1st stage	2nd stage	1st stage	2nd stage	2.0	1.8	15
SMP-2K-1C					3.0	200	3.0	0.1	4.5	4.0	18
									7.0	6.0	21

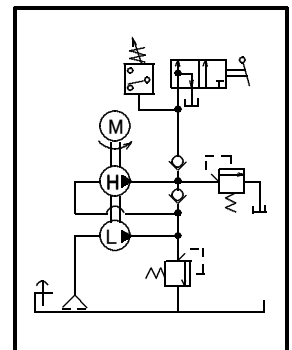
SMP-2K-1B ■ Dimensional drawing



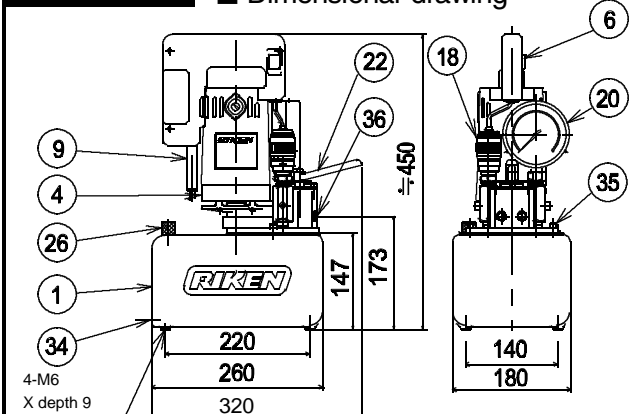
■ Parts list

No.	Name	Remarks
1	Reservoir	
4	Electric motor	Commutator
6	Operation switch	SW-3C
9	Power cable	3m
18	Pressure switch	SPS-2K
20	Pressure gauge	
22	Directional control valve	
26	Air valve and oil feeding port, with level gauge	
34	Drain port	Rc1/4
35	Return port	Rc3/8
36	Output port	M14x1.5

■ Hydraulic circuit



SMP-2K-1C ■ Dimensional drawing



■ Parts list

No.	Name	Remarks
1	Reservoir	
4	Electric motor	Commutator
6	Operation switch	SW-3C
9	Power cable	3m
18	Pressure switch	SPS-2K
20	Pressure gauge	
22	Directional control valve	
26	Air valve and oil feeding port, with level gauge	
34	Drain port	Rc1/4
35	Return port	Rc3/8
36	Output port	M14x1.5

■ Hydraulic circuit

