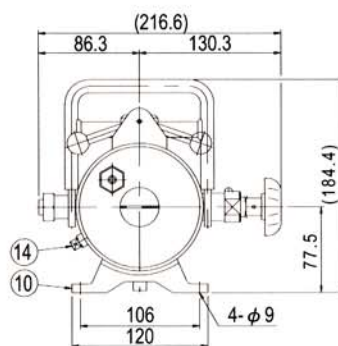
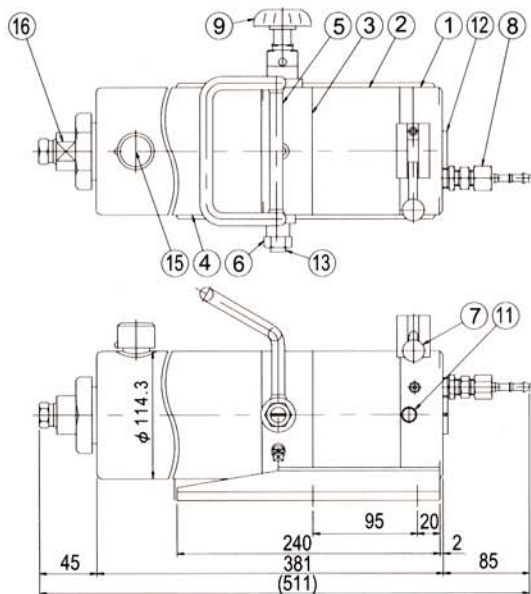


ON-15-2K air-operated oilmatic pump

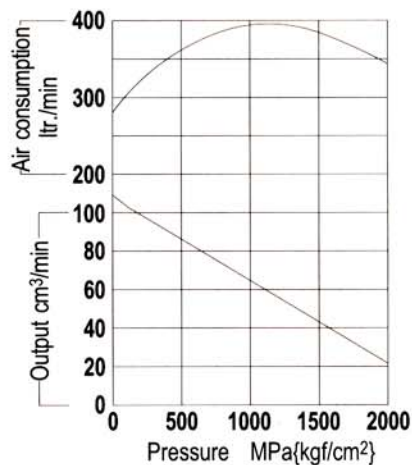


- This lightweight, portable pump utilises line air pressure of 0.45 to 0.7MPa{4.5 to 7 kgf/cm²} to develop super-high pressures of up to 200MPa{2000kgf/cm²}.
- Recommended where electricity is not available and high speed flow is important.
- For use with single-acting cylinders.
- Has completely built-in air shut-off valve, safety valve, release valve and reservoir.
- As hydraulic oil port has M22 X 1.5 female threads, use HC-2000 cone when the pump is connected with a UH- series super-high pressure hose.
- Pump is filled with *RIKEN* wear-proof hydraulic oil (ISO VG46). See page 200.
- Regulator-filter lubricator unit is optional.



- ① Air valve body
- ② Air cylinder
- ③ Hydraulic pump body
- ④ Reservoir
- ⑤ Carrying handle
- ⑥ Safety valve body
- ⑦ Air shut-off lever
- ⑧ Air hose fitting
- ⑨ Hydraulic operation handle
- ⑩ Pump base
- ⑪ Exhaust port
- ⑫ Air change-over valve plug
- ⑬ Plug for safety valve
- ⑭ Drain port plug
- ⑮ Air vent
- ⑯ Hydraulic port (M22X1.5)

ON-15-2K Oilmatic pump performance curve



SPECIFICATIONS

Model	Line air pressure MPa{kgf/cm ² }	Max. working pressure MPa{kgf/cm ² }	Piston dia. mm	Output/stroke cm ³	Reservoir capacity cm ³	Usable oil cm ³	Oil port	With valve	Weight kg
ON-15-2K	0.45 to 0.7{4.5 to 7}	200{2000}	4	≈ 0.2	1.6	1.3	M22 X 1.5	Proper	14.2